

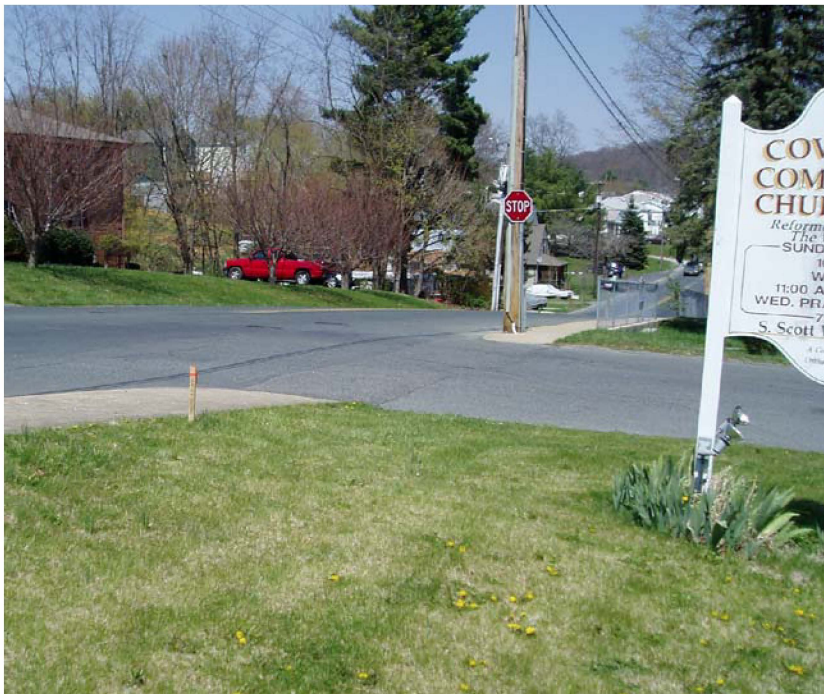
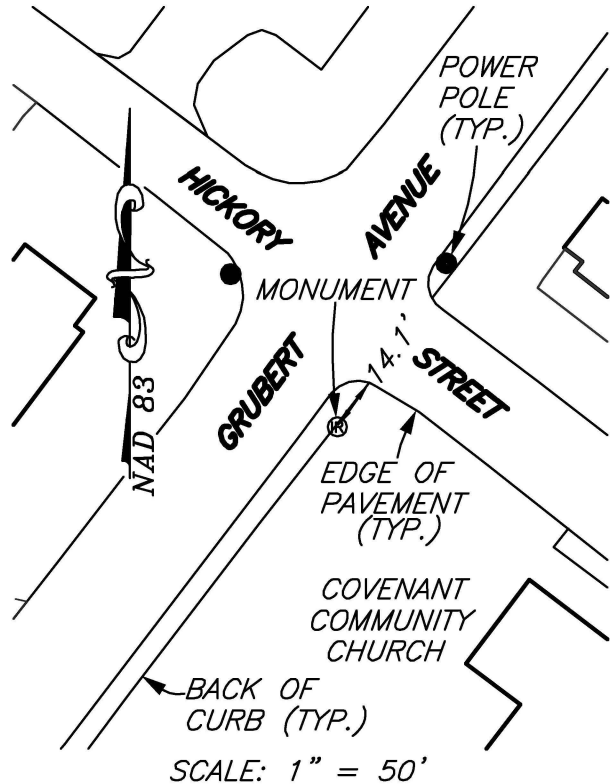
PERMANENT SURVEY MONUMENT
#2007-11
CITY OF STAUNTON, VIRGINIA

LOCATION:

N: 6743263.308
 E: 11312446.803

LAT: 38°09'49.75419"N
 LONG: 79°05'34.47846"W

ORTHOMETRIC HEIGHT: 1532.547'



AZIMUTH MARK:

PK NAIL IN ASPHALT AT THE
 NORTHWEST CORNER OF THE
 INTERSECTION OF HICKORY STREET
 AND "D" STREET.

BEARING: S66°25'54"E
 DISTANCE: 297.98'

ORTHOMETRIC HEIGHT: 1545.548'

NOTES:

- 1) THIS MONUMENT IS A CAPPED ROD READING "CITY OF STAUNTON SURVEY CONTROL."
- 2) THE POSITION OF THIS MONUMENT IS BASED ON THE 2006 CITY OF STAUNTON PERMANENT CONTROL SURVEY BY WILLIAMS-STACKHOUSE, INC.