

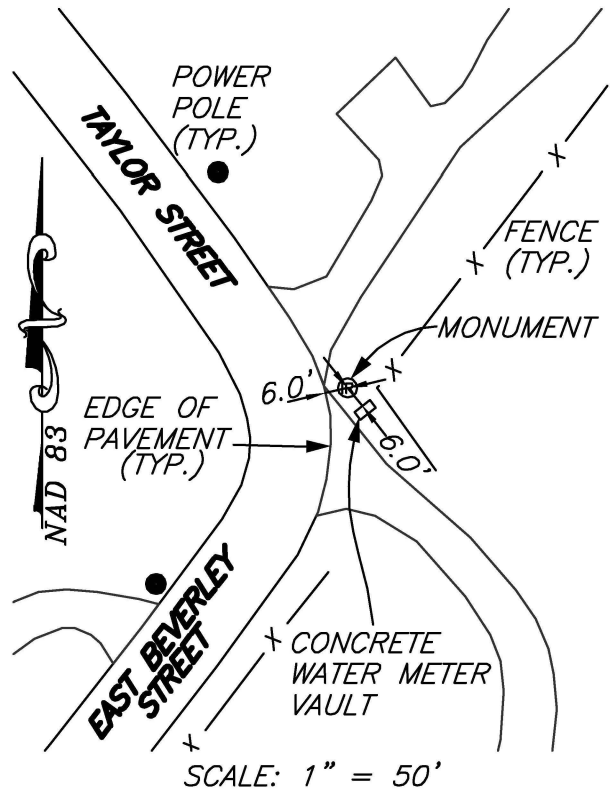
*PERMANENT SURVEY MONUMENT  
#2007-12  
CITY OF STAUNTON, VIRGINIA*

LOCATION:

N: 6742484.802  
E: 11324022.440

LAT: 38°09'42.77225"N  
LONG: 79°03'09.48312"W

ORTHOMETRIC HEIGHT: 1446.672'



AZIMUTH MARK:

PK NAIL IN ASPHALT AT THE  
NORTHEAST CORNER OF THE  
INTERSECTION OF EAST BEVERLEY  
STREET AND RIDGEMONT DRIVE.

BEARING: S38°27'32"W  
DISTANCE: 1117.07'

ORTHOMETRIC HEIGHT: 1410.608'

NOTES:

- 1) THIS MONUMENT IS A CAPPED ROD READING "CITY OF STAUNTON SURVEY CONTROL."
- 2) THE POSITION OF THIS MONUMENT IS BASED ON THE 2006 CITY OF STAUNTON PERMANENT CONTROL SURVEY BY WILLIAMS-STACKHOUSE, INC.