

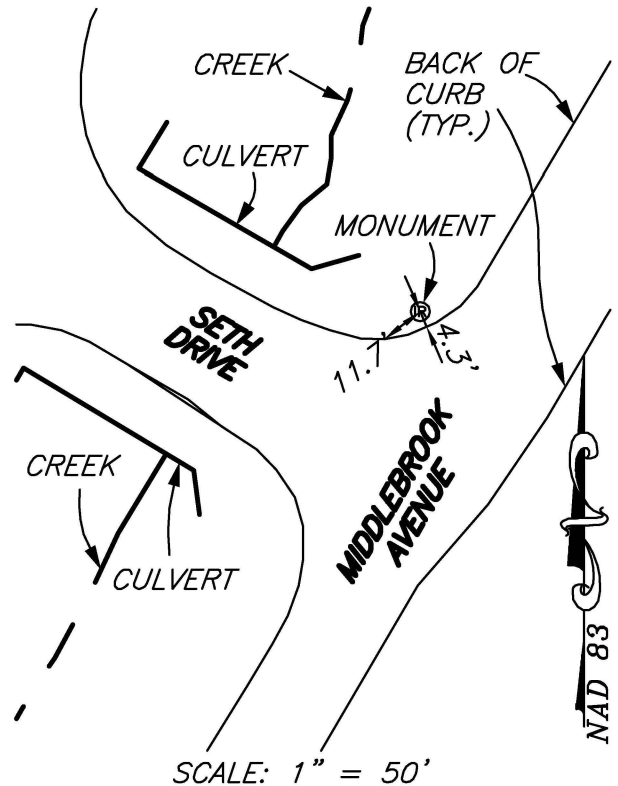
*PERMANENT SURVEY MONUMENT
#2007-16
CITY OF STAUNTON, VIRGINIA*

LOCATION:

N: 6733058.916
E: 11313977.040

LAT: 38°08'08.97627"N
LONG: 79°05'14.50116"W

ORTHOMETRIC HEIGHT: 1431.29'



DIRECTIONS:

CAPPED IRON ROD LOCATED AT THE NORTHWEST CORNER OF THE INTERSECTION OF MIDDLEBROOK AVENUE AND SETH DRIVE.

NOTES:

- 1) THIS MONUMENT IS A CAPPED ROD READING "CITY OF STAUNTON SURVEY CONTROL."
- 2) THE POSITION OF THIS MONUMENT IS BASED ON THE 2006 CITY OF STAUNTON PERMANENT CONTROL SURVEY BY WILLIAMS-STACKHOUSE, INC.

PLANNERS • ARCHITECTS • ENGINEERS • SURVEYORS
ROANOKE • RICHMOND • NEW RIVER VALLEY • SHENANDOAH VALLEY
1561 Commerce Road • Suite 401 • Verona, Virginia 24482 • Phone (540) 248-3220 • Fax (540) 248-3221

BALZER
AND ASSOCIATES INC.
BVINCIO
REFLECTING TOMORROW