

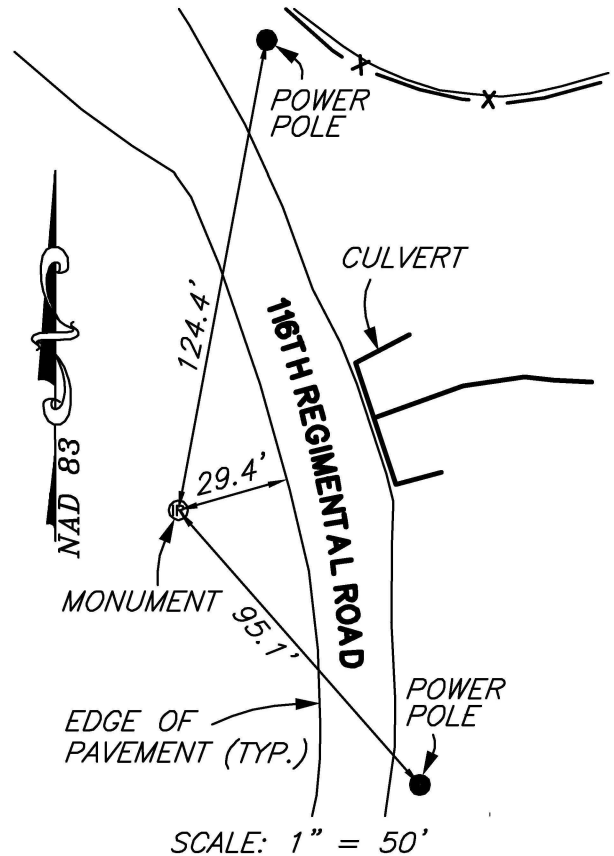
*PERMANENT SURVEY MONUMENT
#2007-17
CITY OF STAUNTON, VIRGINIA*

LOCATION:

N: 6741426.823
E: 11315768.462

LAT: 38°09'31.80969"N
LONG: 79°04'52.74297"W

ORTHOMETRIC HEIGHT: 1461.84'



DIRECTIONS:

CAPPED IRON ROD SET BETWEEN
116TH REGIMENTAL ROAD AND LAKE
TAMS AT GYPSY HILL PARK.

NOTES:

- 1) THIS MONUMENT IS A CAPPED ROD READING "CITY OF STAUNTON SURVEY CONTROL."
- 2) THE POSITION OF THIS MONUMENT IS BASED ON THE 2006 CITY OF STAUNTON PERMANENT CONTROL SURVEY BY WILLIAMS-STACKHOUSE, INC.

PLANNERS • ARCHITECTS • ENGINEERS • SURVEYORS
ROANOKE • RICHMOND • NEW RIVER VALLEY • SHENANDOAH VALLEY
1561 Commerce Road • Suite 401 • Verona, Virginia 24482 • Phone (540) 248-3220 • Fax (540) 248-3221

BALZER
AND ASSOCIATES INC.
BVINCIO
REFLECTING TOMORROW