

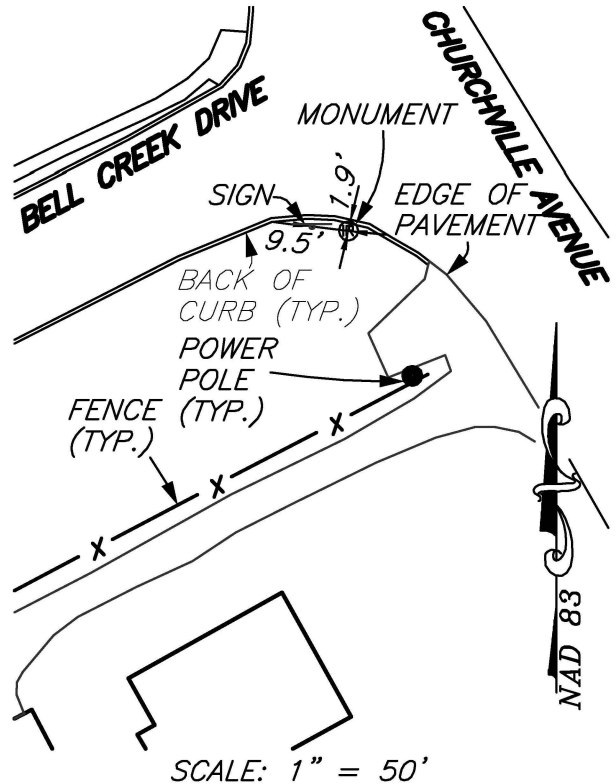
**PERMANENT SURVEY MONUMENT
#2007-19
CITY OF STAUNTON, VIRGINIA**

LOCATION:

N: 6748356.898
E: 11312349.148

LAT: 38°10'10.10041"N
LONG: 79°05'36.11337"W

ORTHOMETRIC HEIGHT: 1627.284'



AZIMUTH MARK:

CONCRETE MOUNMENT AT THE FIRST POINT OF CURVATURE IN THE CENTERLINE OF BELL CREEK DRIVE.

BEARING: S71°58'49"W
DISTANCE: 183.50'

ORTHOMETRIC HEIGHT: 1639.422'

NOTES:

- 1) THIS MONUMENT IS A CAPPED ROD READING "CITY OF STAUNTON SURVEY CONTROL."
- 2) THE POSITION OF THIS MONUMENT IS BASED ON THE 2006 CITY OF STAUNTON PERMANENT CONTROL SURVEY BY WILLIAMS-STACKHOUSE, INC.