

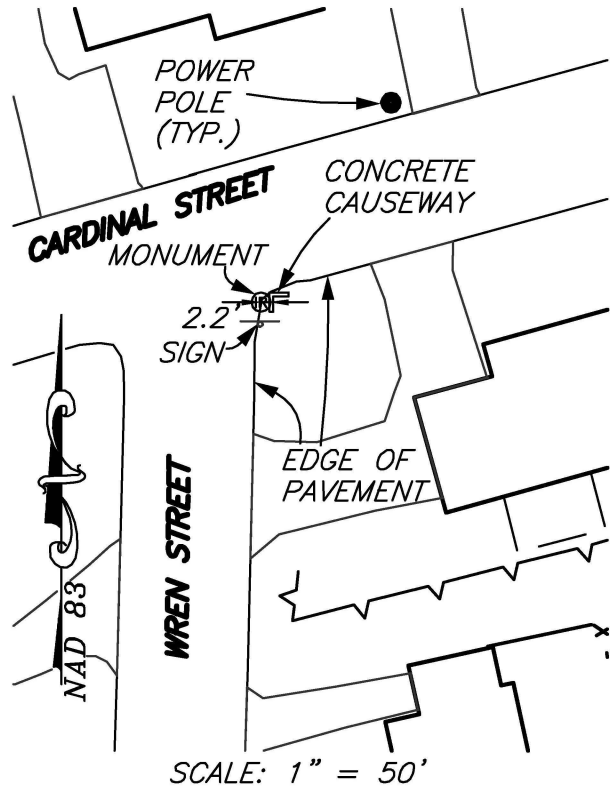
# PERMANENT SURVEY MONUMENT #2007-20 CITY OF STAUNTON, VIRGINIA

LOCATION:

N: 6746069.565  
E: 11311367.428

LAT: 38°10'17.42618"N  
LONG: 79°05'48.22146"W

ORTHOMETRIC HEIGHT: 1640.856'



AZIMUTH MARK:

PK NAIL IN ASPHALT ON THE WEST SIDE OF WREN STREET APPROXIMATELY 200' SOUTH OF THE INTERSECTION OF WREN STREET AND CARDINAL STREET.

BEARING: S10°28'13"W  
DISTANCE: 203.62'

ORTHOMETRIC HEIGHT: 1659.570'

NOTES:

- 1) THIS MONUMENT IS A CAPPED ROD READING "CITY OF STAUNTON SURVEY CONTROL."
- 2) THE POSITION OF THIS MONUMENT IS BASED ON THE 2006 CITY OF STAUNTON PERMANENT CONTROL SURVEY BY WILLIAMS-STACKHOUSE, INC.