

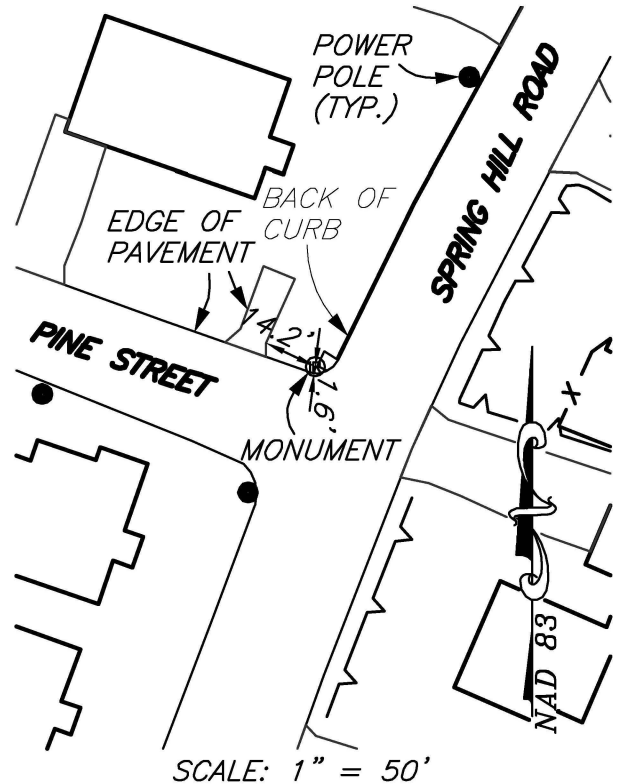
*PERMANENT SURVEY MONUMENT
#2007-23
CITY OF STAUNTON, VIRGINIA*

LOCATION:

N: 6744320.580
E: 11316966.910

LAT: 38°10'00.49058"N
LONG: 79°04'37.96625"W

ORTHOMETRIC HEIGHT: 1480.515'



AZIMUTH MARK:

PK NAIL IN ASPHALT AT THE
SOUTHEAST CORNER OF THE
INTERSECTION OF LYLE AVENUE AND
PINE STREET.

BEARING: N75°18'51"W
DISTANCE: 324.57'

ORTHOMETRIC HEIGHT: 1484.386'

NOTES:

- 1) THIS MONUMENT IS A CAPPED ROD READING "CITY OF STAUNTON SURVEY CONTROL."
- 2) THE POSITION OF THIS MONUMENT IS BASED ON THE 2006 CITY OF STAUNTON PERMANENT CONTROL SURVEY BY WILLIAMS-STACKHOUSE, INC.