

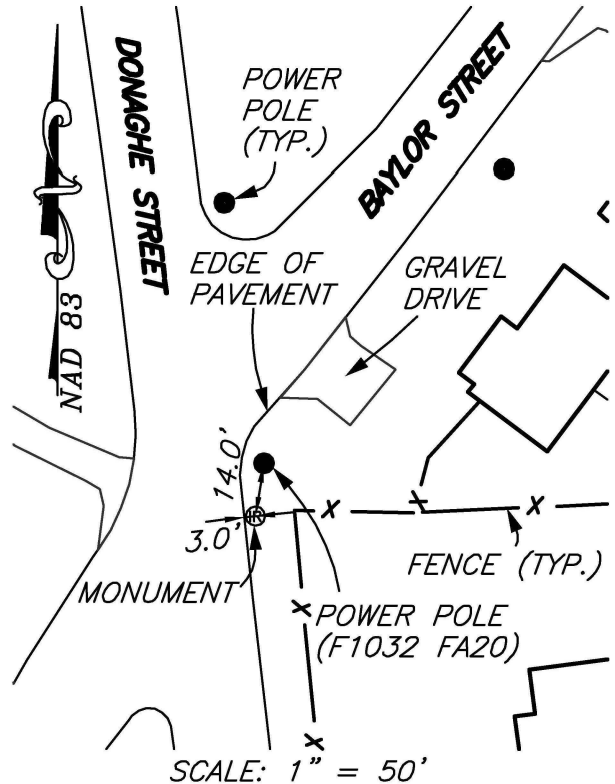
PERMANENT SURVEY MONUMENT #2007-24 CITY OF STAUNTON, VIRGINIA

LOCATION:

N: 6744326.386
E: 11317864.829

LAT: 38°10'00.60364"N
LONG: 79°04'26.72356"W

ORTHOMETRIC HEIGHT: 1517.052'



AZIMUTH MARK:

PK NAIL IN ASPHALT ON THE NORTHWEST SIDE OF BAYLOR STREET APPROXIMATELY 225' FROM THE INTERSECTION OF BAYLOR STREET AND DONAGHE STREET.

BEARING: N29°56'42"E
DISTANCE: 266.69'

ORTHOMETRIC HEIGHT: 1521.229'

NOTES:

- 1) THIS MONUMENT IS A CAPPED ROD READING "CITY OF STAUNTON SURVEY CONTROL."
- 2) THE POSITION OF THIS MONUMENT IS BASED ON THE 2006 CITY OF STAUNTON PERMANENT CONTROL SURVEY BY WILLIAMS-STACKHOUSE, INC.