

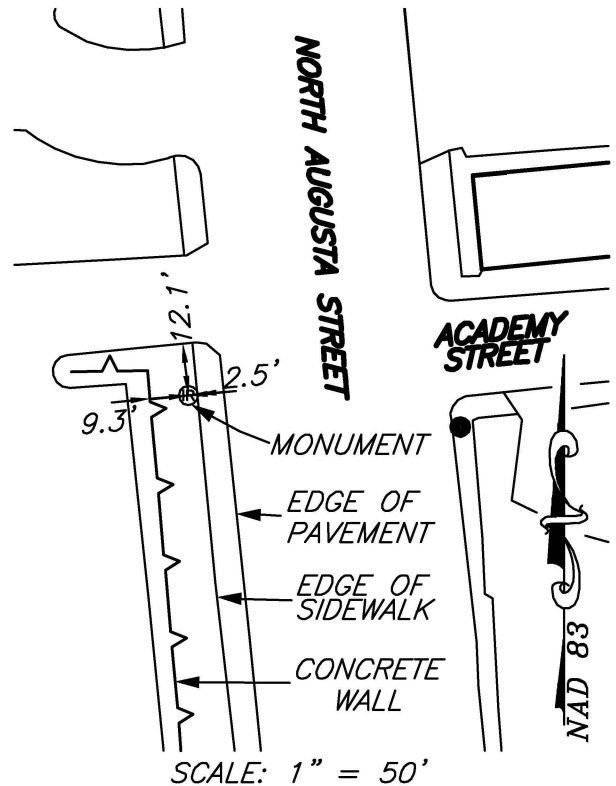
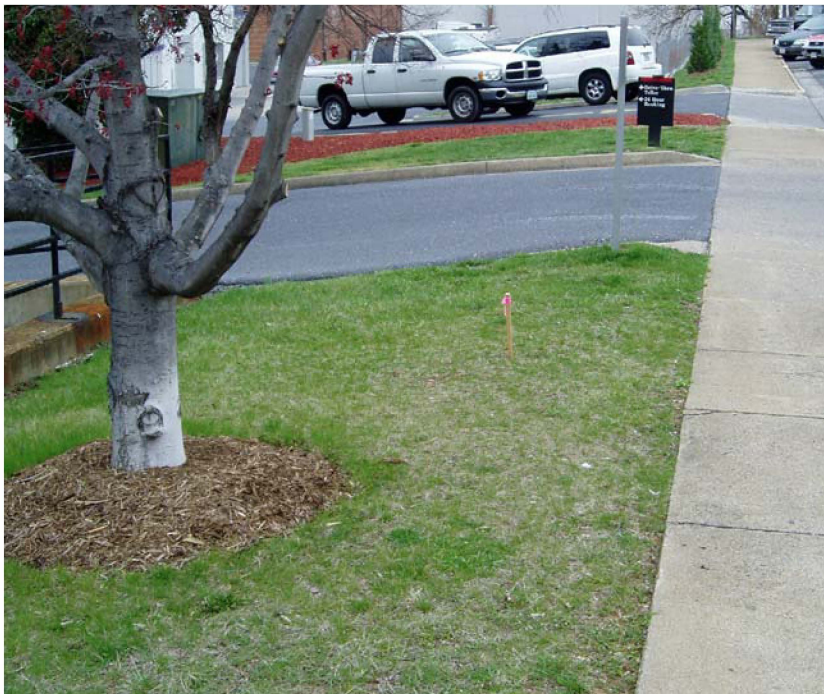
PERMANENT SURVEY MONUMENT #2008-27 CITY OF STAUNTON, VIRGINIA

LOCATION:

N: 6739089.814
E: 11318083.952

LAT: 38°09'08.85115"N
LONG: 79°04'23.57044"W

ORTHOMETRIC HEIGHT: 1432.622'



AZIMUTH MARK:

PK NAIL IN ASPHALT ON THE
NORTHEAST CORNER OF THE
INTERSECTION OF MARKET STREET
AND ACADEMY STREET.

BEARING: N83°11'04"E
DISTANCE: 679.74'

ORTHOMETRIC HEIGHT: 1516.582'

NOTES:

- 1) THIS MONUMENT IS A CAPPED ROD READING "CITY OF STAUNTON SURVEY CONTROL."
- 2) THE POSITION OF THIS MONUMENT IS BASED ON THE 2006 CITY OF STAUNTON PERMANENT CONTROL SURVEY BY WILLIAMS-STACKHOUSE, INC.