

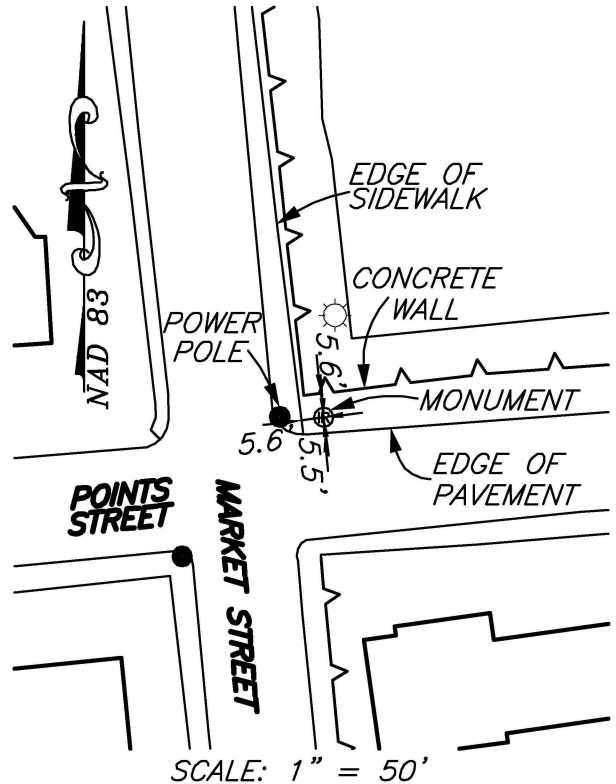
*PERMANENT SURVEY MONUMENT  
#2008-28  
CITY OF STAUNTON, VIRGINIA*

LOCATION:

N: 6739921.035  
E: 11318692.350

LAT: 38°09'17.10568"N  
LONG: 79°04'16.01873"W

ORTHOMETRIC HEIGHT: 1478.256'



DIRECTIONS:

CAPPED IRON ROD SET AT THE  
NORTHEAST CORNER OF THE  
INTERSECTION OF POINTS STREET  
AND MARKET STREET.

NOTES:

- 1) THIS MONUMENT IS A CAPPED ROD READING "CITY OF STAUNTON SURVEY CONTROL."
- 2) THE POSITION OF THIS MONUMENT IS BASED ON THE 2006 CITY OF STAUNTON PERMANENT CONTROL SURVEY BY WILLIAMS-STACKHOUSE, INC.

**PLANNERS • ARCHITECTS • ENGINEERS • SURVEYORS**  
ROANOKE • RICHMOND • NEW RIVER VALLEY • SHENANDOAH VALLEY  
1561 Commerce Road • Suite 401 • Verona, Virginia 24482 • Phone (540) 248-3220 • Fax (540) 248-3221

**BALZER**  
AND ASSOCIATES INC.  
**BVINCIO**  
REFLECTING TOMORROW