

PERMANENT SURVEY MONUMENT #2008-31

CITY OF STAUNTON, VIRGINIA

LOCATION:

N: 6739173.279
E: 11317502.455

LAT: 38°09'09.6403"
LONG: 79°04'30.8567"

ORTHOMETRIC HEIGHT: 1416.98'

AZIMUTH MARK:

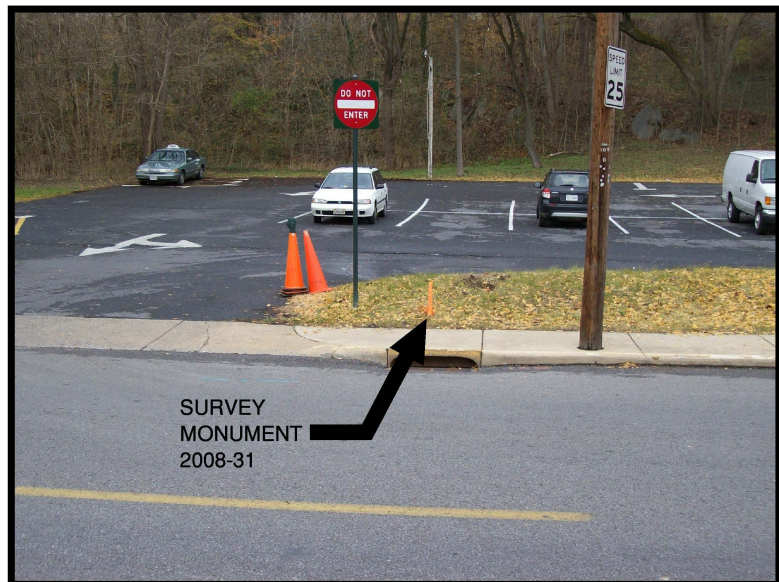
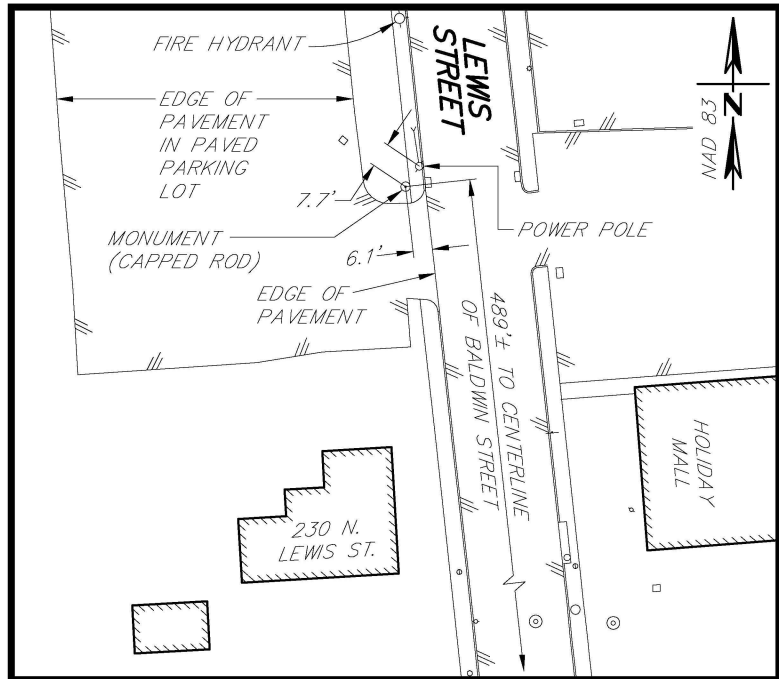
PK NAIL IN SIDEWALK AT
NORTHEAST CORNER OF
INTERSECTION OF LEWIS
STREET AND BALDWIN STREET

BEARING: S11°05'32"E
DISTANCE: 456.92'

ORTHOMETRIC HEIGHT: 1418.64'

NOTES:

1. THIS MONUMENT IS A CAPPED ROD READING "CITY OF STAUNTON SURVEY CONTROL."
2. THE POSITION OF THIS MONUMENT IS BASED ON THE 2006 CITY OF STAUNTON PERMANENT CONTROL SURVEY BY WILLIAMS-STACKHOUSE, INC.



P:\R08\300\R08349\R08349-03\VCAD\BASEMAP.dwg 2008-31.dwg Dec 03, 2008 9:21am



Draper Aden Associates
Engineering + Surveying + Environmental Services

700 Harris Street, Suite E
Charlottesville, VA
434-295-0700 Fax: 434-295-2105

Blacksburg, VA
Richmond, VA
Hampton Roads, VA

DRAWN: HLJ
CHECKED: CAS

SCALE: 1" = 60'
DATE: 12/05/08

PLAN NO. R08349-03CV

SHEET
1 OF 1