

# PERMANENT SURVEY MONUMENT #2008-32

## CITY OF STAUNTON, VIRGINIA

**LOCATION:**

N: 6737562.104  
E: 11317958.472

LAT: 38°08'53.7413"  
LONG: 79°04'25.0218"

ORTHOMETRIC HEIGHT: 1374.67

**AZIMUTH MARK:**

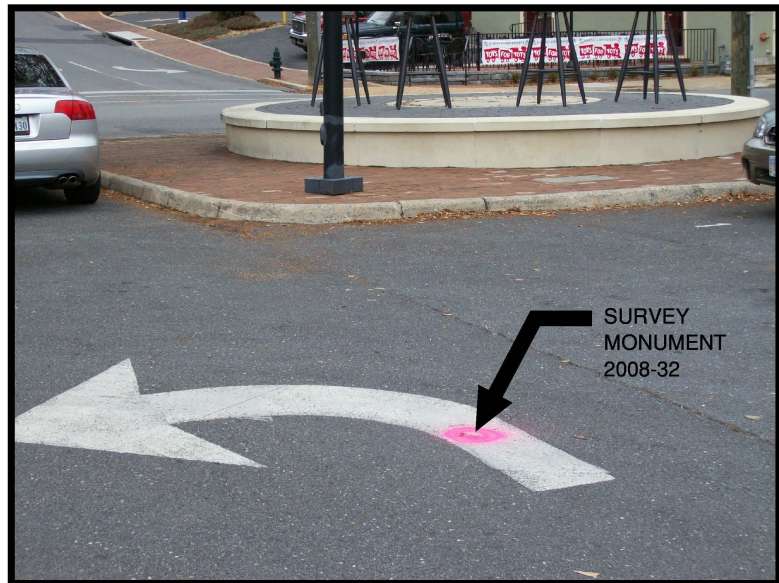
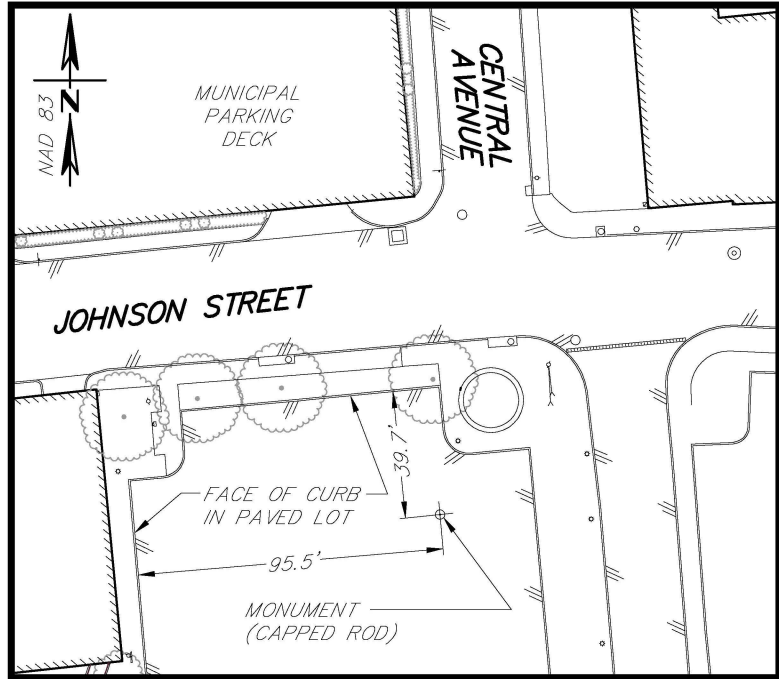
PK NAIL IN SIDEWALK AT  
SOUTHEAST CORNER OF  
AUGUSTA STREET AND  
JOHNSON STREET.

BEARING: N79°48'49"E  
DISTANCE: 358.79'

ORTHOMETRIC HEIGHT: 1379.87'

**NOTES:**

1. THIS MONUMENT IS A CAPPED ROD READING "CITY OF STAUNTON SURVEY CONTROL."
2. THE POSITION OF THIS MONUMENT IS BASED ON THE 2006 CITY OF STAUNTON PERMANENT CONTROL SURVEY BY WILLIAMS-STACKHOUSE, INC.



P:\R08\300\R08349\R08349-03\VCAD\BASEMAP.dwg 2008-32.dwg Dec 03, 2008 9:22am



**Draper Aden Associates**  
Engineering + Surveying + Environmental Services

700 Harris Street, Suite E  
Charlottesville, VA  
434-295-0700 Fax: 434-295-2105

Blacksburg, VA  
Richmond, VA  
Hampton Roads, VA

DRAWN: HLJ  
CHECKED: CAS

SCALE: 1" = 60'  
DATE: 12/05/08

PLAN NO. R08349-03CV

SHEET  
1 OF 1