

PERMANENT SURVEY MONUMENT
#2009-39
CITY OF STAUNTON, VIRGINIA

LOCATION:

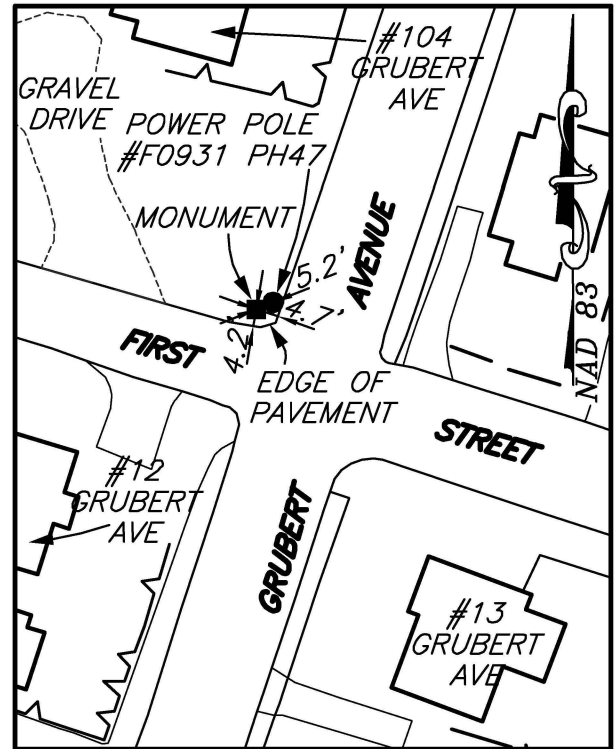
N: 6740621.862
E: 11310914.017

LAT: 38°09'23.54399"N
LONG: 79°05'53.45463"W

ORTHOMETRIC HEIGHT: 1553.736'

DIRECTIONS:

CAPPED IRON ROD SET IN GRASS AT THE NORTHWEST CORNER OF THE INTERSECTION OF GRUBERT AVENUE AND FIRST STREET.



SCALE: 1" = 50'

AZIMUTH MARK:

PK NAIL IN ASPHALT ON THE SOUTHWEST CORNER OF THE INTERSECTION OF FIRST STREET AND GRAY AVENUE.

BEARING: S68°07'17"E
DISTANCE: 501.13'

ORTHOMETRIC HEIGHT: 1538.846'

NOTES:

- 1) THIS MONUMENT IS A CAPPED ROD READING "CITY OF STAUNTON SURVEY CONTROL."
- 2) THE POSITION OF THIS MONUMENT IS BASED ON THE 2006 CITY OF STAUNTON PERMANENT CONTROL SURVEY BY WILLIAMS-STACKHOUSE, INC.