

PERMANENT SURVEY MONUMENT #2009-40
 CITY OF STAUNTON, VIRGINIA

LOCATION:

N 6747712.103

E 11318834.729

LAT 38°10'34.1328"

LONG -79°4'14.8427"

ORTHOMETRIC HEIGHT:

1629.65'

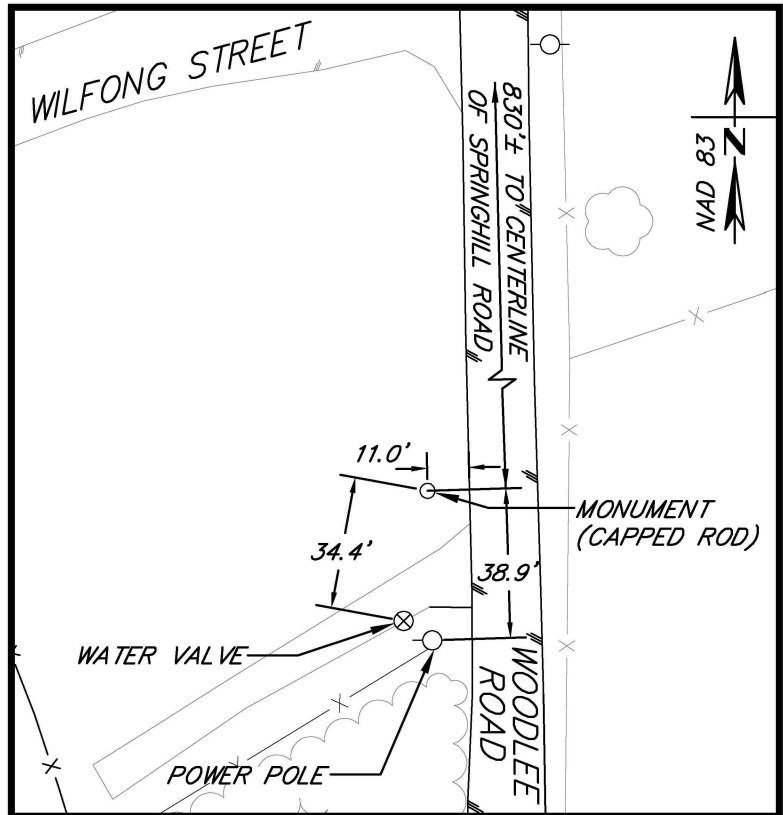
AZIMUTH MARK:

CITY OF STAUNTON DISK
 2009-41 512' SOUTH OF THE
 INTERSECTION OF WOODLEE
 ROAD AND SPRINGHILL ROAD

BEARING: N 00-14-27 W

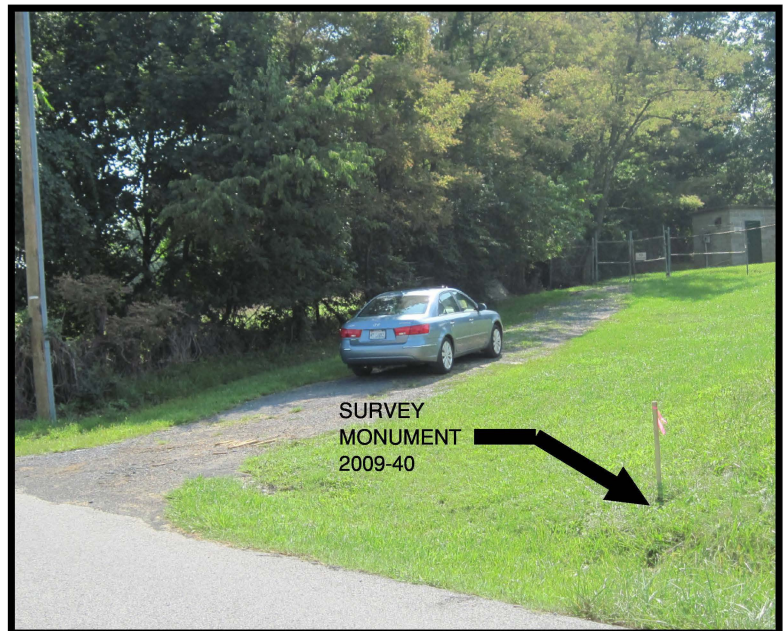
DISTANCE: 315.00'

ORTHOMETRIC HEIGHT: 1631.36'



NOTES:

1. THIS MONUMENT IS A CAPPED ROD READING "CITY OF STAUNTON SURVEY CONTROL."
2. THE POSITION OF THIS MONUMENT IS BASED ON THE 2006 CITY OF STAUNTON PERMANENT CONTROL SURVEY BY WILLIAMS-STACKHOUSE, INC.



P:\CV061100\CV06148\CV06148-03\CAD\CV06148-03\C3D\dwg\2009-40.dwg Sep 02, 2010 5:16pm



Draper Aden Associates
 Engineering + Surveying + Environmental Services

700 Harris Street, Suite E
 Charlottesville, VA
 434-295-0700 Fax: 434-295-2105

Blacksburg, VA
 Richmond, VA
 Hampton Roads, VA

DRAWN: CAS
 CHECKED: HLJ

SCALE: 1" = 50'
 DATE: 8/25/10

PLAN NO. CV06148-03

SHEET
 1 OF 1