

**PERMANENT SURVEY MONUMENT #2009-41**  
**CITY OF STAUNTON, VIRGINIA**

LOCATION:

N 6748027.097

E 11318833.405

LAT 38°10'37.2466"

LONG -79°4'14.8838"

ORTHOMETRIC HEIGHT:

1631.36'

AZIMUTH MARK:

CITY OF STAUNTON DISK  
 2009-40 830' SOUTH OF  
 THE INTERSECTION OF  
 WOODLEE ROAD AND  
 SPRINGHILL ROAD

BEARING: S 00-14-27 E

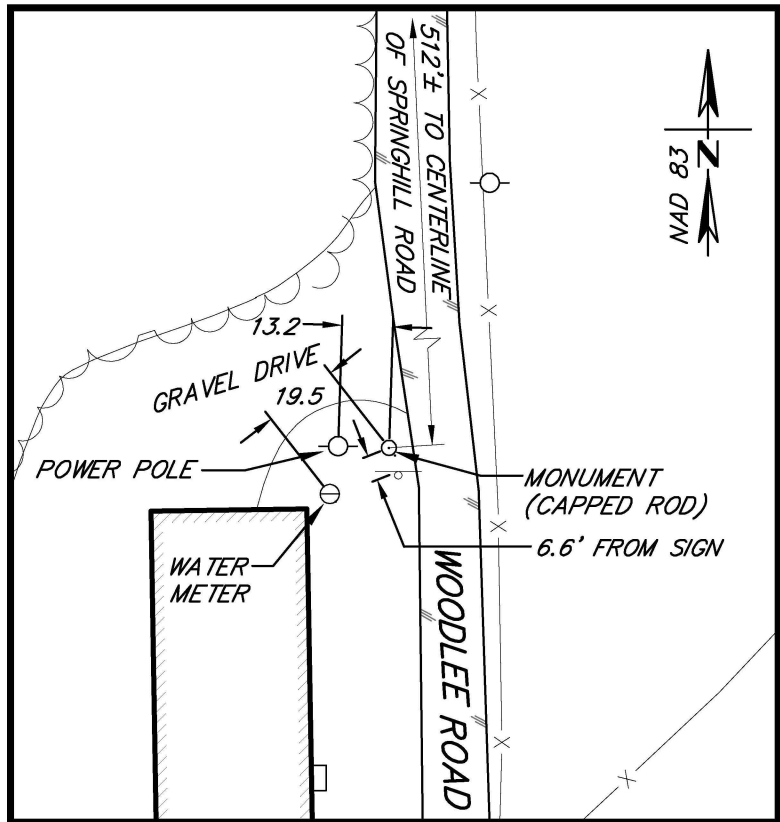
DISTANCE: 315.00'

ORTHOMETRIC HEIGHT:

1629.65'

NOTES:

1. THIS MONUMENT IS A CAPPED ROD READING "CITY OF STAUNTON SURVEY CONTROL."
2. THE POSITION OF THIS MONUMENT IS BASED ON THE 2006 CITY OF STAUNTON PERMANENT CONTROL SURVEY BY WILLIAMS-STACKHOUSE, INC.



P:\CV06100\CV06148\CV06148-03\CAD\CV06148-03\_SUR\_C3D.dwg;2009-41.dwg Sep 02, 2010 5:04pm



**Draper Aden Associates**  
 Engineering + Surveying + Environmental Services

700 Harris Street, Suite E  
 Charlottesville, VA  
 434-295-0700 Fax: 434-295-2105

Blacksburg, VA  
 Richmond, VA  
 Hampton Roads, VA

DRAWN: CAS  
 CHECKED: HLJ

SCALE: 1"=50'  
 DATE: 8/25/10

PLAN NO. CV06148-03

SHEET  
 1 OF 1