

PERMANENT SURVEY MONUMENT #2009-42
CITY OF STAUNTON, VIRGINIA

LOCATION:

N 6748881.778

E 11323738.792

LAT 38°10'45.9925"
LONG -79°3'13.5177"

ORTHOMETRIC HEIGHT:
1586.49'

AZIMUTH MARK:

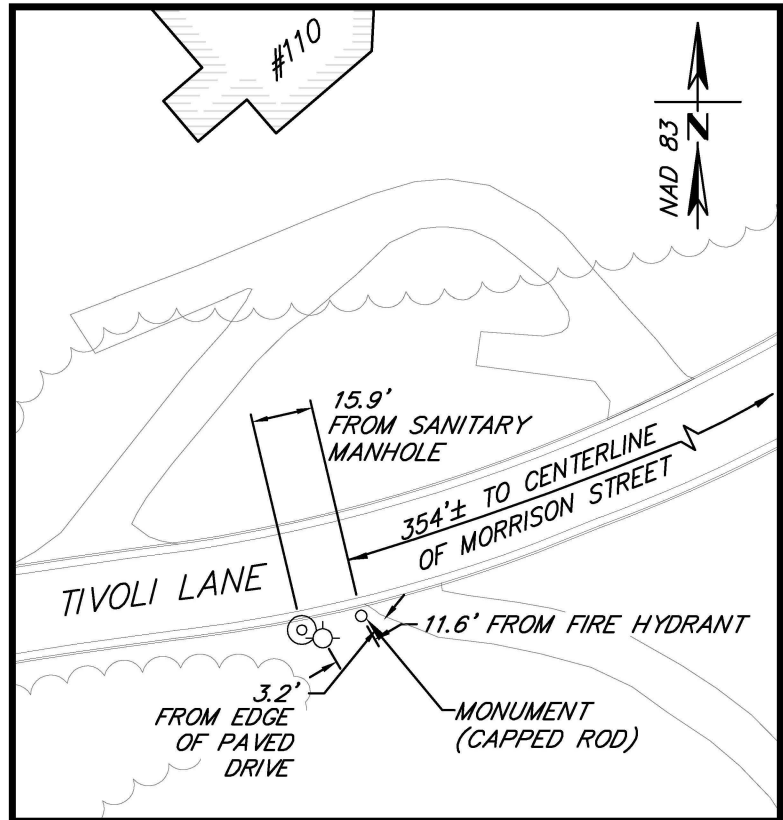
CITY OF STAUNTON DISK
2009-43 AT THE
INTERSECTION OF TIVOLI
LANE AND MORRISON
STREET

BEARING: N 59-45-35 E
DISTANCE: 370.99'

ORTHOMETRIC HEIGHT:
1543.87'

NOTES:

1. THIS MONUMENT IS A CAPPED ROD READING "CITY OF STAUNTON SURVEY CONTROL."
2. THE POSITION OF THIS MONUMENT IS BASED ON THE 2006 CITY OF STAUNTON PERMANENT CONTROL SURVEY BY WILLIAMS-STACKHOUSE, INC.



P:\CV061100\CV06148\CV06148-03\CAD\CV06148-03_SUR_C3D\dwg\2009-42.dwg Sep 02, 2010 5:25pm



Draper Aden Associates
Engineering + Surveying + Environmental Services

700 Harris Street, Suite E
Charlottesville, VA
434-295-0700 Fax: 434-295-2105

Blacksburg, VA
Richmond, VA
Hampton Roads, VA

DRAWN: CAS
CHECKED: HLJ

SCALE: 1" = 50'
DATE: 8/25/10

PLAN NO. CV06148-03

SHEET
1 OF 1