

**PERMANENT SURVEY MONUMENT #2009-43**  
CITY OF STAUNTON, VIRGINIA

LOCATION:

N 6749068.619

E 11324059.300

LAT 38°10'47.8587"

LONG -79°3'9.5179"

ORTHOMETRIC HEIGHT:

1543.87'

AZIMUTH MARK:

CITY OF STAUNTON DISK  
2009-42 354' WEST OF  
THE THE INTERSECTION OF  
TIVOLI LANE AND  
MORRISON STREET

BEARING: S 59-45-35 W

DISTANCE: 370.99'

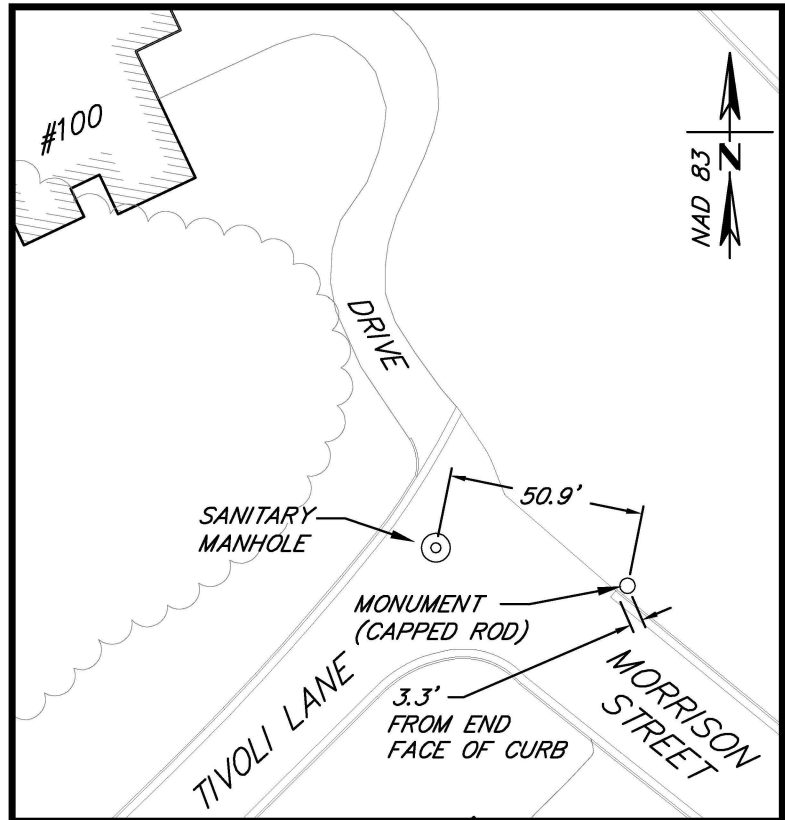
ORTHOMETRIC HEIGHT:

1586.49'

NOTES:

1. THIS MONUMENT IS A  
CAPPED ROD READING "CITY  
OF STAUNTON SURVEY  
CONTROL."

2. THE POSITION OF THIS  
MONUMENT IS BASED ON  
THE 2006 CITY OF  
STAUNTON PERMANENT  
CONTROL SURVEY BY  
WILLIAMS-STACKHOUSE, INC.



P:\CV06100\CV06148\CV06148-03\CAD\CV06148-03\_SUR\_C3D.dwg; 2009-43.dwg Sep 02, 2010 5:13pm



**Draper Aden Associates**

Engineering ♦ Surveying ♦ Environmental Services

700 Harris Street, Suite E  
Charlottesville, VA  
434-295-0700 Fax: 434-295-2105

Blacksburg, VA  
Richmond, VA  
Hampton Roads, VA

DRAWN: CAS

CHECKED: HLJ

SCALE: 1" = 50'

DATE: 8/25/10

PLAN NO. CV06148-03

SHEET  
1 OF 1