

PERMANENT SURVEY MONUMENT #2009-45
CITY OF STAUNTON, VIRGINIA

LOCATION:

N 6745474.372

E 11321548.894

LAT 38°10'12.1772"

LONG -79°3'40.6820"

ORTHOMETRIC HEIGHT:

1535.22'

AZIMUTH MARK:

CITY OF STAUNTON DISK
2009-44 302' SOUTH OF
THE INTERSECTION OF
WOODLAND DRIVE AND
GREENWAY ROAD

BEARING: N 00-56-23 E

DISTANCE: 504.79'

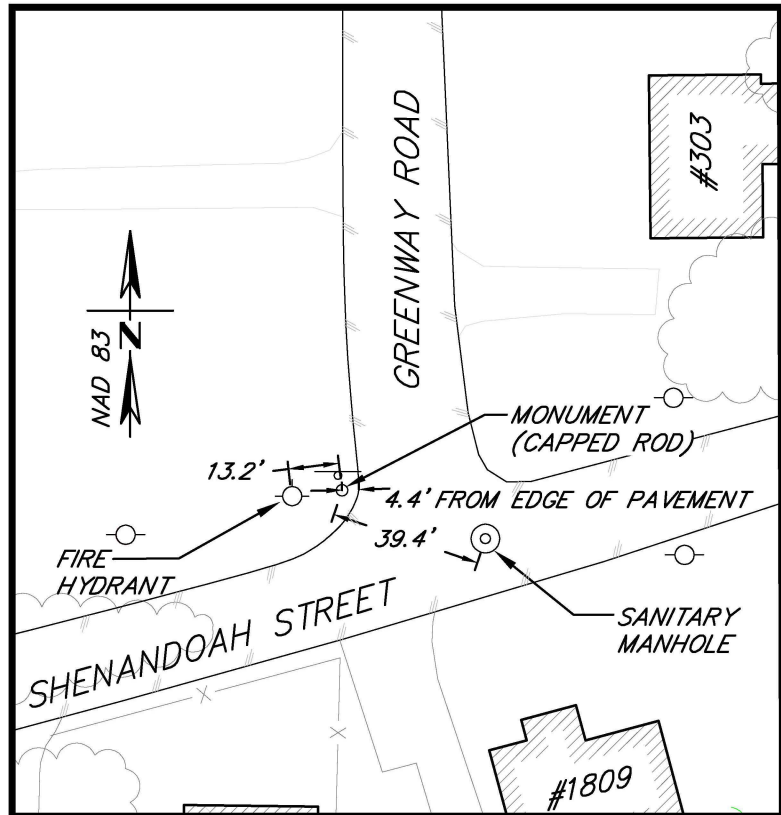
ORTHOMETRIC HEIGHT:

1578.81'

NOTES:

1. THIS MONUMENT IS A
CAPPED ROD READING "CITY
OF STAUNTON SURVEY
CONTROL."

2. THE POSITION OF THIS
MONUMENT IS BASED ON
THE 2006 CITY OF
STAUNTON PERMANENT
CONTROL SURVEY BY
WILLIAMS-STACKHOUSE, INC.



P:\CV06100\CV06148\CV06148-03\CAD\CV06148-03_SUR_CSD\dwg\2009-45.dwg Sep 02, 2010 5:11pm



Draper Aden Associates

Engineering ♦ Surveying ♦ Environmental Services

700 Harris Street, Suite E
Charlottesville, VA
434-295-0700 Fax: 434-295-2105

Blacksburg, VA
Richmond, VA
Hampton Roads, VA

DRAWN: CAS

CHECKED: HLJ

SCALE: 1" = 50'

DATE: 8/25/10

PLAN NO. CV06148-03

SHEET
1 OF 1