

# PERMANENT SURVEY MONUMENT #2010-48 CITY OF STAUNTON, VIRGINIA

LOCATION:

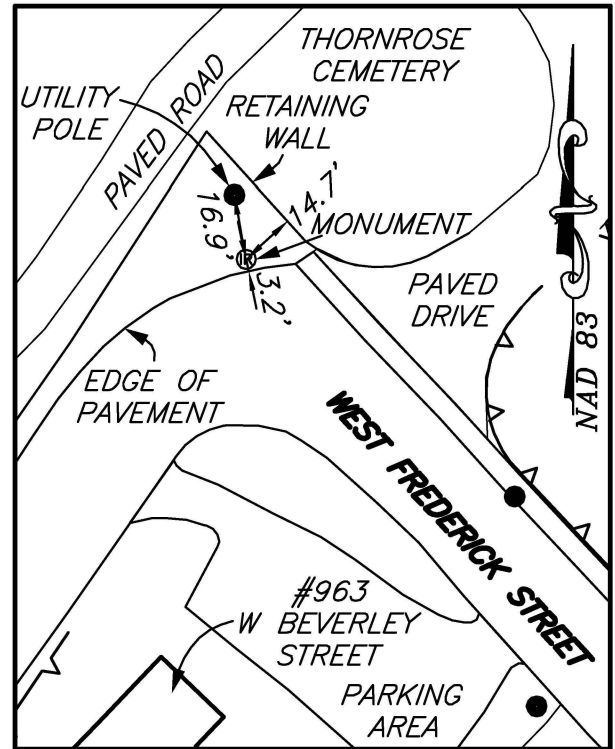
N: 6738455.100  
E: 11315463.895

LAT: 38°09'02.41373"N  
LONG: 79°04'56.32013"W

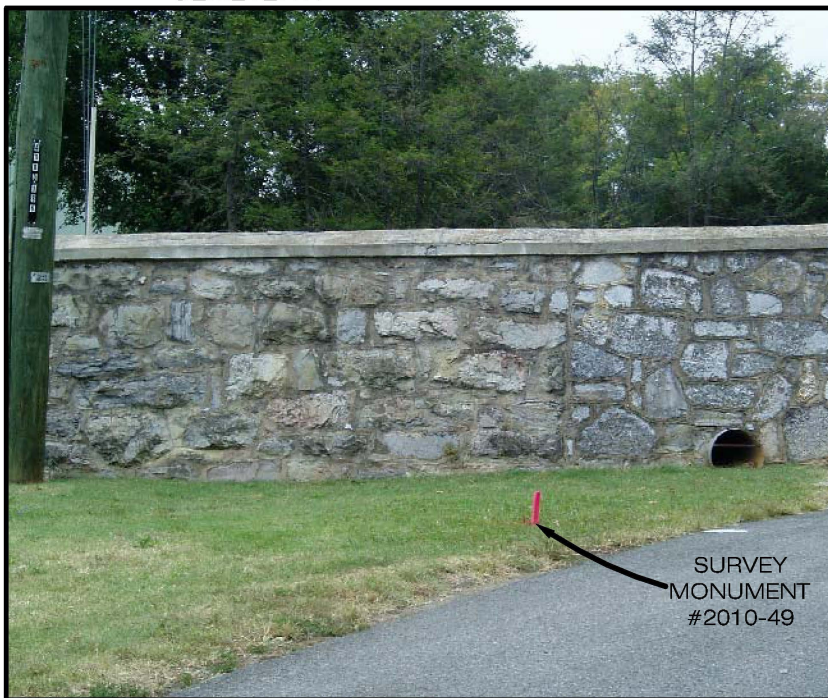
ORTHOMETRIC HEIGHT: 1495.935'

DIRECTIONS:

CAPPED IRON ROD SET IN GRASS BESIDE CURVE IN WEST FREDERICK STREET, JUST WEST OF ENTRANCE TO THORNROSE CEMETERY.



SCALE: 1" = 50'



AZIMUTH MARK:

PK NAIL IN ASPHALT IN FRONT OF THE FIRE HYDRANT NEAR #654 WEST FREDERICK STREET.

BEARING: S43°52'57"E  
DISTANCE: 416.39'

ORTHOMETRIC HEIGHT: 1534.031'

NOTES:

- 1) THIS MONUMENT IS A CAPPED ROD READING "CITY OF STAUNTON SURVEY CONTROL."
- 2) THE POSITION OF THIS MONUMENT IS BASED ON THE 2006 CITY OF STAUNTON PERMANENT CONTROL SURVEY BY WILLIAMS-STACKHOUSE, INC.

**PLANNERS • ARCHITECTS • ENGINEERS • SURVEYORS**  
ROANOKE • RICHMOND • NEW RIVER VALLEY • SHENANDOAH VALLEY  
1561 Commerce Road • Suite 401 • Verona, Virginia 24482 • Phone (540) 248-3220 • Fax (540) 248-3221

