

PERMANENT SURVEY MONUMENT #2010-49 CITY OF STAUNTON, VIRGINIA

LOCATION:

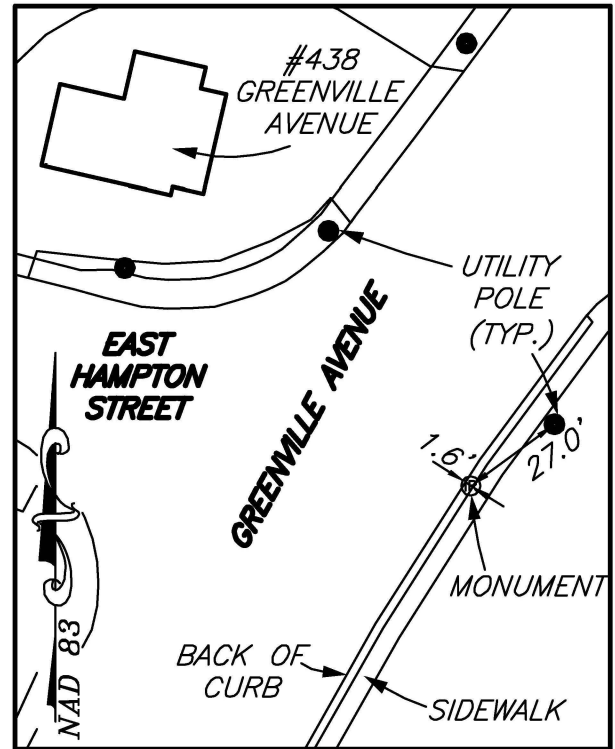
N: 6735517.205
E: 11318671.232

LAT: 38°08'33.57042"N
LONG: 79°04'15.94013"W

ORTHOMETRIC HEIGHT: 1371.072'

DIRECTIONS:

CAPPED IRON ROD SET IN GRASS ALONG GREENVILLE AVENUE, OPPOSITE THE INTERSECTION WITH EAST HAMPTON STREET.



SCALE: 1" = 50'



AZIMUTH MARK:

PK NAIL IN ASPHALT AT THE SOUTHWESTERN CORNER OF THE INTERSECTION OF EAST HAMPTON STREET AND BALTIMORE AVENUE.

BEARING: N76°47'37"W
DISTANCE: 269.41'

ORTHOMETRIC HEIGHT: 1393.651'

NOTES:

- 1) THIS MONUMENT IS A CAPPED ROD READING "CITY OF STAUNTON SURVEY CONTROL."
- 2) THE POSITION OF THIS MONUMENT IS BASED ON THE 2006 CITY OF STAUNTON PERMANENT CONTROL SURVEY BY WILLIAMS-STACKHOUSE, INC.

PLANNERS • ARCHITECTS • ENGINEERS • SURVEYORS
ROANOKE • RICHMOND • NEW RIVER VALLEY • SHENANDOAH VALLEY
1561 Commerce Road • Suite 401 • Verona, Virginia 24482 • Phone (540) 248-3220 • Fax (540) 248-3221

