

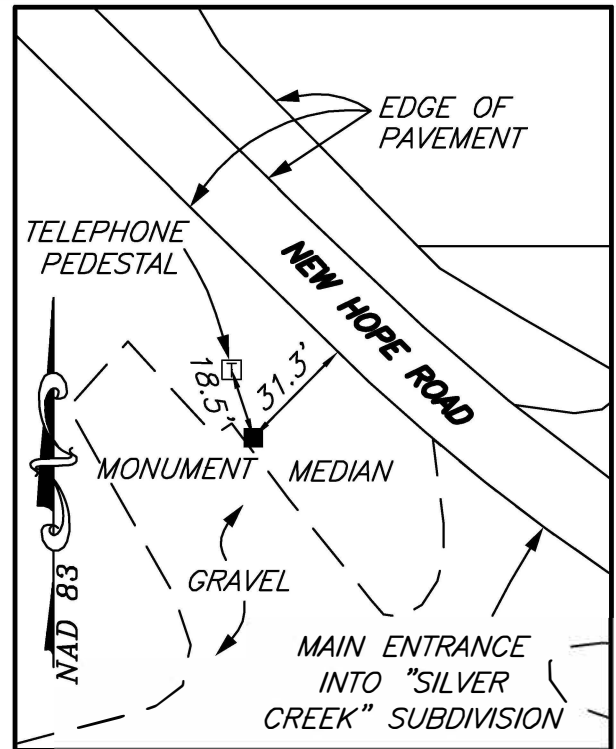
**PERMANENT SURVEY MONUMENT**  
**#2012-55**  
**CITY OF STAUNTON, VIRGINIA**

LOCATION:

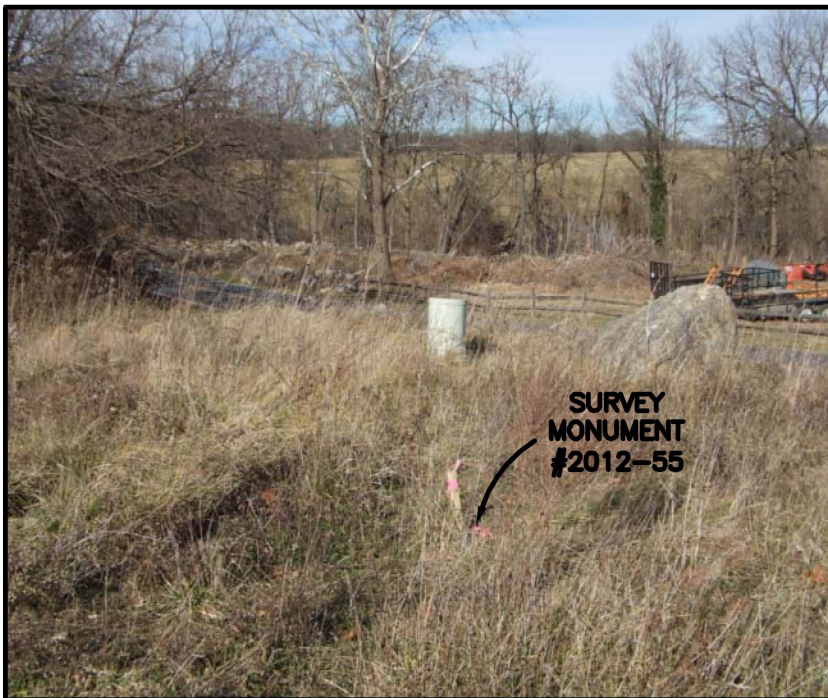
N: 6738659.145  
E: 11325103.978

LAT: 38°09'05.01789"N  
LONG: 79°02'55.65539"W

ORTHOMETRIC HEIGHT: 1314.976'



SCALE: 1" = 50'



DIRECTIONS:

CAPPED IRON ROD SET 31.3 FEET FROM THE EDGE OF PAVEMENT ON THE WESTERN SIDE OF NEW HOPE ROAD, 18.5 FEET SOUTH A TELEPHONE PEDESTAL, APPROXIMATELY 70 FEET NORTH OF THE MAIN ENTRANCE INTO SILVER CREEK SUBDIVISION, AND APPROXIMATELY 200 FEET SOUTH OF THE LEWIS CREEK CROSSING.

NOTES:

- 1) • THIS MONUMENT IS A CAPPED ROD READING "CITY OF STAUNTON SURVEY CONTROL."
- 2) • THIS MONUMENT IS SET IN CONJUNCTION WITH THE "SILVER CREEK" SUBDIVISION.
- 2) THE POSITION OF THIS MONUMENT IS BASED ON THE 2006 CITY OF STAUNTON PERMANENT CONTROL SURVEY BY WILLIAMS-STACKHOUSE, INC.

**PLANNERS • ARCHITECTS • ENGINEERS • SURVEYORS**  
ROANOKE • RICHMOND • NEW RIVER VALLEY • SHENANDOAH VALLEY  
1561 Commerce Road • Suite 401 • Verona, Virginia 24482 • Phone (540) 248-3220 • Fax (540) 248-3221

**BALZER**  
AND ASSOCIATES INC.  
**BVINC**  
REFLECTING TOMORROW