

# GPS DATA SHEET

## STATION DATA

<small>STATION NAME</small> <b>2012-56</b>		<small>MUNICIPALITY</small> <b>CITY OF STAUNTON</b>	
<small>ZONE:</small> Virginia North	<small>CONVERGANCE:</small> 00° 21' 41.79245" W	<small>YEAR SET:</small> 2012	
<small>PROJECTION:</small> Lambert	<small>COMBINED FACTOR:</small> 0.999918301	<small>YEAR RECOVERED:</small>	
<b>HORIZONTAL</b>	<small>DATUM:</small> NAD 83	<small>SCALE FACTOR:</small> 0.99998192	
	<small>NORTHING:</small> 6,737,023.9732 ft.	<small>EASTING:</small> 11,316,294.2786 ft.	
	<small>LATITUDE:</small> 38° 08' 48.31830" N	<small>LONGITUDE:</small> 079° 04' 45.81186" W	
<b>VERTICAL</b>	<small>NAVD 88 ELEVATION:</small> 1435.837 ft.	<small>ELEVATION FACTOR</small> 0.99993638	

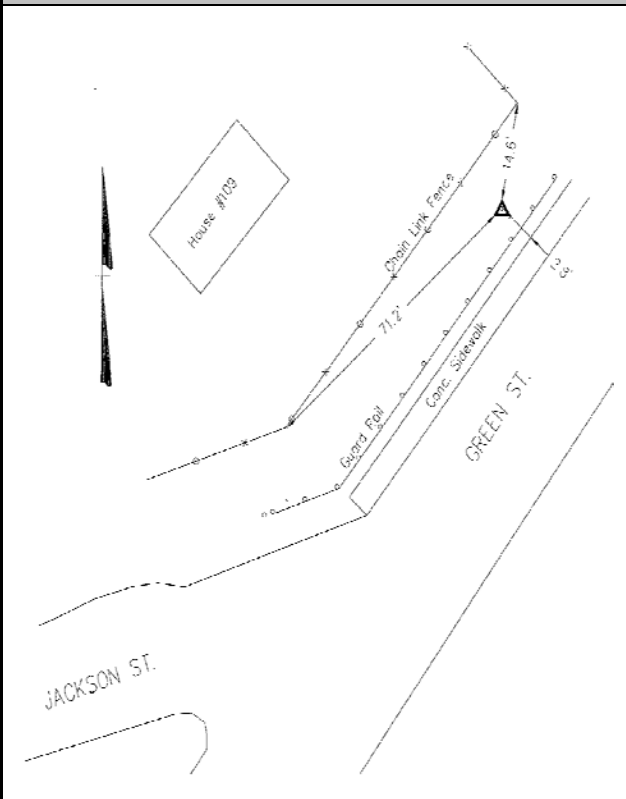
## STATION LOCATION & DESCRIPTION

The station is an aluminum disk reading "City Of Staunton Survey Control" on a threaded rod set flush with the ground level on the north west grass shoulder of Green Street. The station is ± 103 feet northeast of the intersection of Jackson Street and Green Street.

**AZIMUTH MARK:** (332° 05' 45" 282.45')

PK Nail in asphalt on the north east side of Cochran St. PK Nail is ± 46 feet north of Power Pole #VPCO BA99.

### STATION SKETCH



### STATION PHOTOGRAPH

