

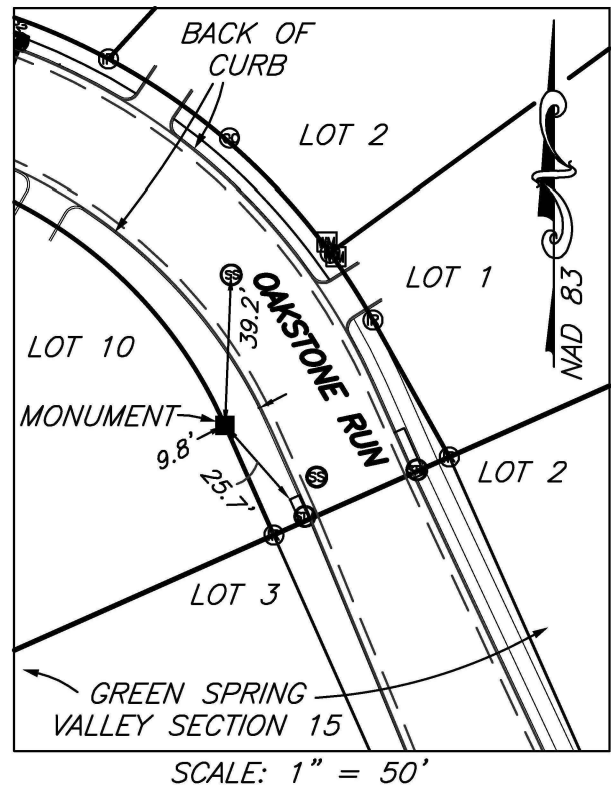
# PERMANENT SURVEY MONUMENT #2016-63 CITY OF STAUNTON, VIRGINIA

LOCATION:

N: 6732448.531  
E: 11316844.306

LAT: 38°08'03.1221"N  
LONG: 79°04'38.5665"W

ORTHOMETRIC HEIGHT: 1506.68'



AZIMUTH MARK:

CASED CONCRETE MONUMENT IN CENTERLINE OF GEOFFERY STREET AT INTERSECTION WITH OAKSTONE RUN.

BEARING: S31°30'58"E  
DISTANCE: 190.84'

ORTHOMETRIC HEIGHT: 1496.89'

NOTES:

- 1) THIS MONUMENT IS A CAPPED ROD READING "CITY OF STAUNTON SURVEY CONTROL."
- 2) THE POSITION OF THIS MONUMENT IS BASED ON THE 2006 CITY OF STAUNTON PERMANENT CONTROL SURVEY BY WILLIAMS-STACKHOUSE, INC.
- 3) THIS MONUMENT WAS SET IN CONJUNCTION WITH THE "GREEN SPRING VALLEY, SECTION 16" PROJECT.

