

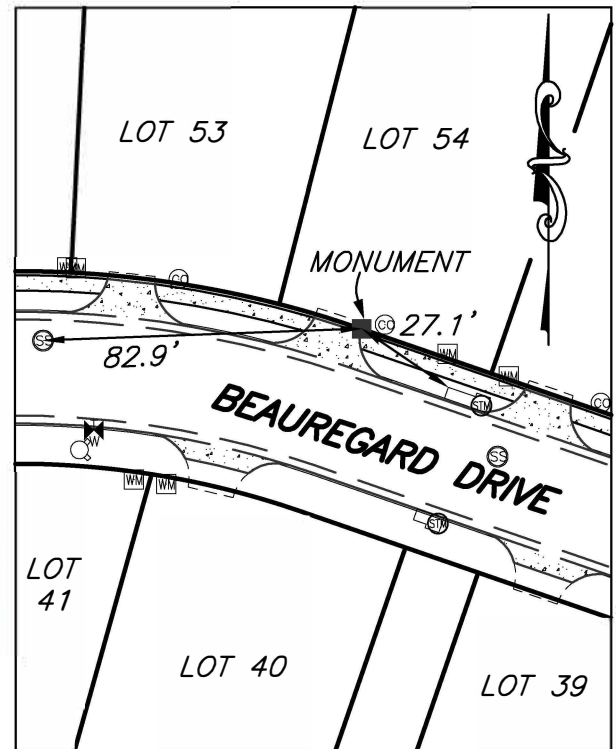
PERMANENT SURVEY MONUMENT
#2016-64
CITY OF STAUNTON, VIRGINIA

LOCATION:

N: 6754137.557
 E: 11331660.451

LAT: 38°11'38.4091"N
 LONG: 79°01'34.6877"W

ORTHOMETRIC HEIGHT: 1483.24'



SCALE: 1" = 50'

AZIMUTH MARK:

RAILROAD SPIKE IN CENTERLINE OF
 BEAUREGARD DRIVE BETWEEN
 MANASSAS LANE AND STONEWALL
 JACKSON BOULEVARD.

BEARING: S67°14'36"E
 DISTANCE: 273.12'

ORTHOMETRIC HEIGHT: 1465.46'

NOTES:

- 1) THIS MONUMENT IS A CAPPED ROD READING "CITY OF STAUNTON SURVEY CONTROL."
- 2) HORIZONTAL DATUM BASED ON PLAT TITLED "OLDE SOUTH VILLAGE SUBDIVISION, SECTION ONE" BY PATTON HARRIS RUST & ASSOCIATES RECORDED IN THE CLERKS OFFICE CITY OF STAUNTON AT INST #080000874.
- 3) VERTICAL DATUM BASED ON OLDE SOUTH VILLAGE SECTION ONE SITE PLAN BY PATTON HARRIS RUST & ASSOCIATES.
- 4) THIS MONUMENT WAS SET IN CONJUNCTION WITH THE "OLDE SOUTH VILLAGE SECTION TWO" PROJECT.

PLANNERS • ARCHITECTS • ENGINEERS • SURVEYORS

ROANOKE • RICHMOND • NEW RIVER VALLEY • STAUNTON • HARRISONBURG
 1561 Commerce Road • Suite 401 • Verona, Virginia 24482 • Phone (540) 248-3220 • Fax (540) 248-3221

