

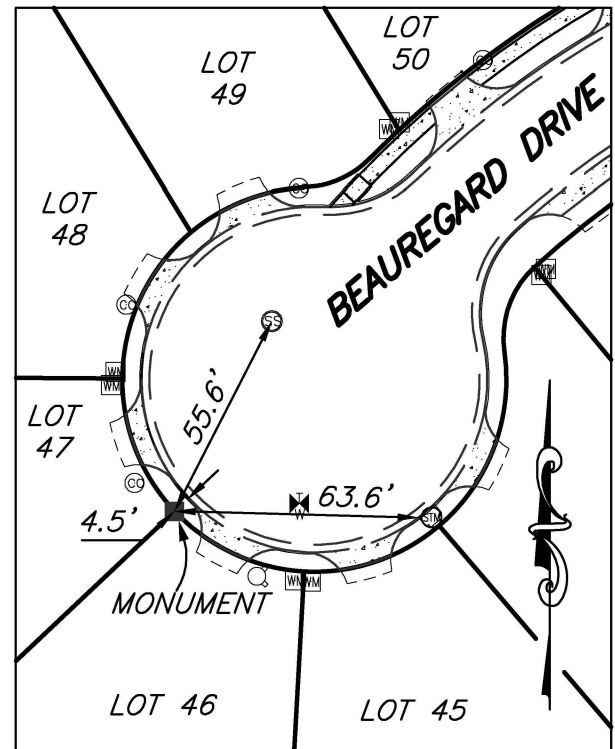
PERMANENT SURVEY MONUMENT #2016-65 CITY OF STAUNTON, VIRGINIA

LOCATION:

N: 6753979.685
E: 11331325.019

LAT: 38°11'36.8295"N
LONG: 79°01'38.8780"W

ORTHOMETRIC HEIGHT: 1488.65'



SCALE: 1" = 50'

AZIMUTH MARK:

CAPPED ROD READING "CITY OF STAUNTON SURVEY CONTROL" IN THE NORTHERN RIGHT-OF-WAY LINE OF BEAUREGARD DRIVE, CITY MONUMENT 2016-64.

BEARING: N64°47'45"E
DISTANCE: 370.73'

ORTHOMETRIC HEIGHT: 1483.24'



SURVEY MONUMENT #2016-65

NOTES:

- 1) THIS MONUMENT IS A CAPPED ROD READING "CITY OF STAUNTON SURVEY CONTROL."
- 2) HORIZONTAL DATUM BASED ON PLAT TITLED "OLDE SOUTH VILLAGE SUBDIVISION, SECTION ONE" BY PATTON HARRIS RUST & ASSOCIATES RECORDED IN THE CLERKS OFFICE CITY OF STAUNTON AT INST #080000874.
- 3) VERTICAL DATUM BASED ON OLDE SOUTH VILLAGE SECTION ONE SITE PLAN BY PATTON HARRIS RUST & ASSOCIATES.
- 3) THIS MONUMENT WAS SET IN CONJUNCTION WITH THE "OLDE SOUTH VILLAGE SECTION TWO" PROJECT.

PLANNERS • ARCHITECTS • ENGINEERS • SURVEYORS

ROANOKE • RICHMOND • NEW RIVER VALLEY • STAUNTON • HARRISONBURG
1561 Commerce Road • Suite 401 • Verona, Virginia 24482 • Phone (540) 248-3220 • Fax (540) 248-3221

