

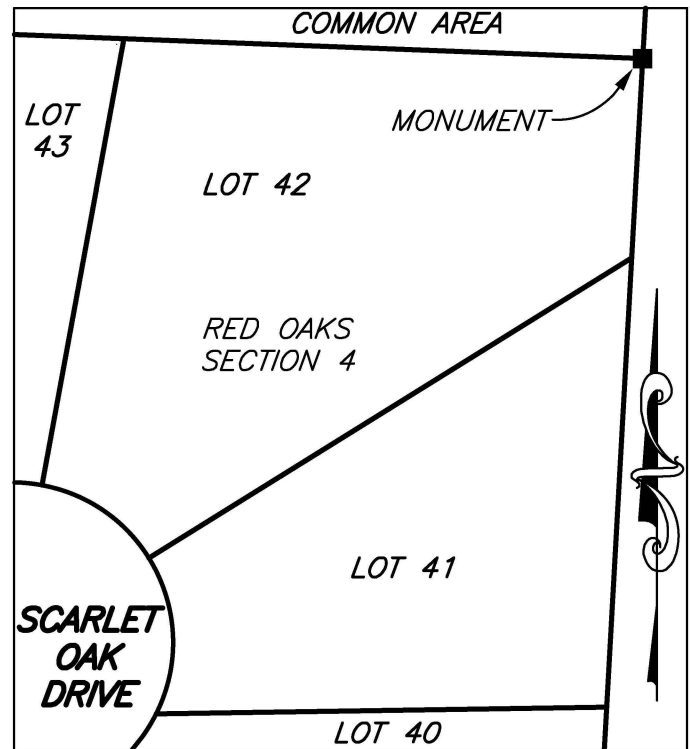
**PERMANENT SURVEY MONUMENT**  
**#2016-66**  
 CITY OF STAUNTON, VIRGINIA

LOCATION:

N: 6730872.186  
 E: 11323253.628

LAT: 38°07'47.9299"N  
 LONG: 79°03'18.2299"W

ORTHOMETRIC HEIGHT: 1612.56



SCALE: 1" = 60'



AZIMUTH MARK:

CASED CONCRETE MONUMENT IN CENTERLINE OF RED OAKS DRIVE AT INTERSECTION WITH SCARLET OAK DRIVE.

BEARING: S05°18'38"W  
 DISTANCE: 1064.92'

ORTHOMETRIC HEIGHT: 1518.47'

NOTES:

- 1) THIS MONUMENT IS A CAPPED ROD READING "CITY OF STAUNTON SURVEY CONTROL."
- 2) THE POSITION OF THIS MONUMENT IS BASED ON THE 2006 CITY OF STAUNTON PERMANENT CONTROL SURVEY BY WILLIAMS-STACKHOUSE, INC..
- 3) THIS MONUMENT WAS SET IN CONJUNCTION WITH THE "RED OAKS SECTION 4" PROJECT.

**PLANNERS • ARCHITECTS • ENGINEERS • SURVEYORS**

ROANOKE • RICHMOND • NEW RIVER VALLEY • STAUNTON • HARRISONBURG  
 1561 Commerce Road • Suite 401 • Verona, Virginia 24482 • Phone (540) 248-3220 • Fax (540) 248-3221

