

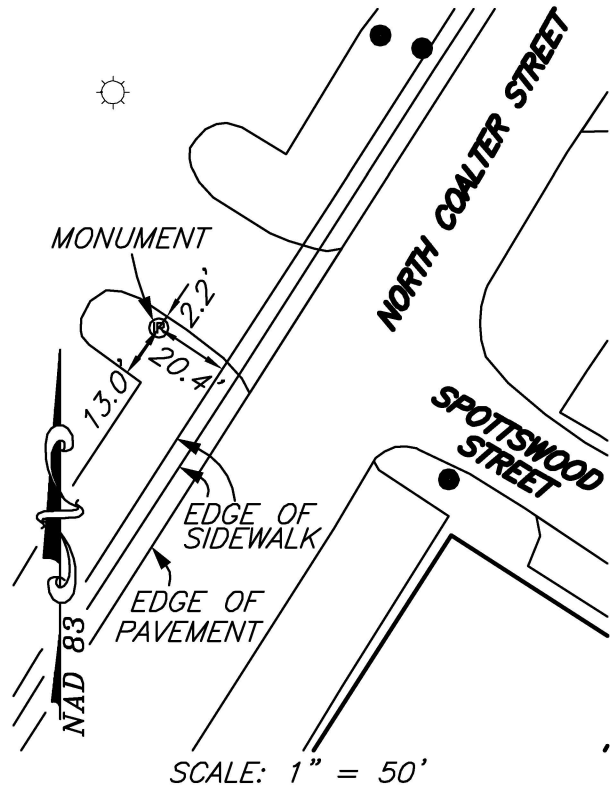
*PERMANENT SURVEY MONUMENT
#2008-30
CITY OF STAUNTON, VIRGINIA*

LOCATION:

N: 6741747.051
E: 11321300.128

LAT: 38°09'35.31583"N
LONG: 79°03'43.51125"W

ORTHOMETRIC HEIGHT: 1417.638'



AZIMUTH MARK:

PK NAIL IN ASPHALT ON THE
NORTHEAST CORNER OF THE
INTERSECTION OF MASON STREET
AND SPOTTSWOOD STREET.

BEARING: S63°01'09"E
DISTANCE: 625.28'

ORTHOMETRIC HEIGHT: 1409.582'

NOTES:

- 1) THIS MONUMENT IS A CAPPED ROD READING "CITY OF STAUNTON SURVEY CONTROL."
- 2) THE POSITION OF THIS MONUMENT IS BASED ON THE 2006 CITY OF STAUNTON PERMANENT CONTROL SURVEY BY WILLIAMS-STACKHOUSE, INC.