

GPS DATA SHEET

STATION DATA

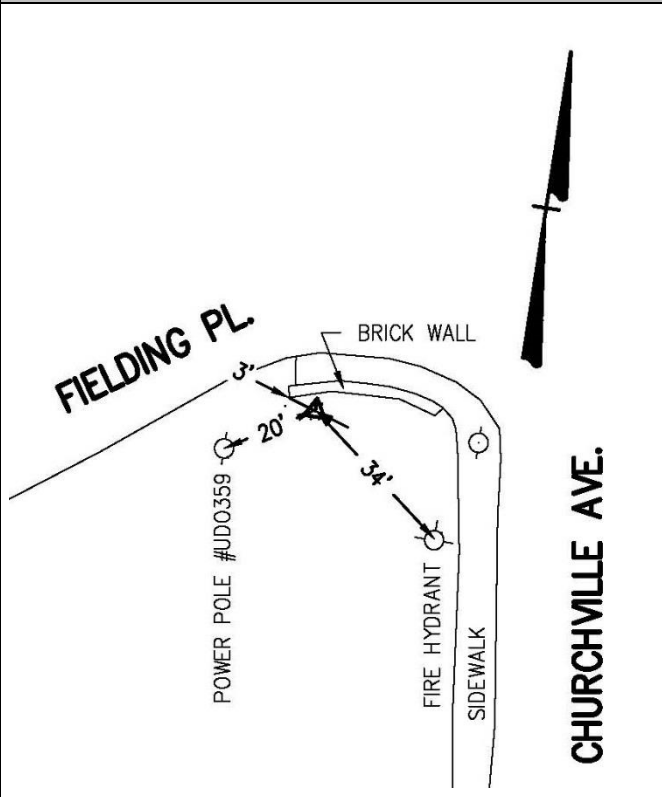
<small>STATION NAME</small> 2016-67		<small>MUNICIPALITY</small> CITY OF STAUNTON	
<small>ZONE:</small> Virginia North	<small>CONVERGANCE:</small> 00° 22' 05.14082" W	<small>YEAR SET:</small> 2016	
<small>PROJECTION:</small> Lambert	<small>COMBINED FACTOR:</small> 0.999910491	<small>YEAR RECOVERED:</small>	
HORIZONTAL	<small>DATUM:</small> City Network	<small>SCALE FACTOR:</small> 0.99997850	
	<small>NORTHING:</small> 6,746,024.623 ft.	<small>EASTING:</small> 11,313,363.557 ft.	
	<small>LATITUDE:</small> 38° 10' 17.10943" N	<small>LONGITUDE:</small> 079° 05' 23.22207" W	
VERTICAL	<small>NAVD 88 ELEVATION:</small> 1527.720 ft.		<small>ELEVATION FACTOR</small> 0.99993199

STATION LOCATION & DESCRIPTION

The station is located at the intersection of Churchville Ave. and Fielding Pl. The station is an aluminum disk on a threaded rod set flush with the ground. For a detailed description see sketch below.

Azimuth Mark: 170° 56' 55" To station 2007-18

STATION SKETCH



STATION PHOTOGRAPH

