

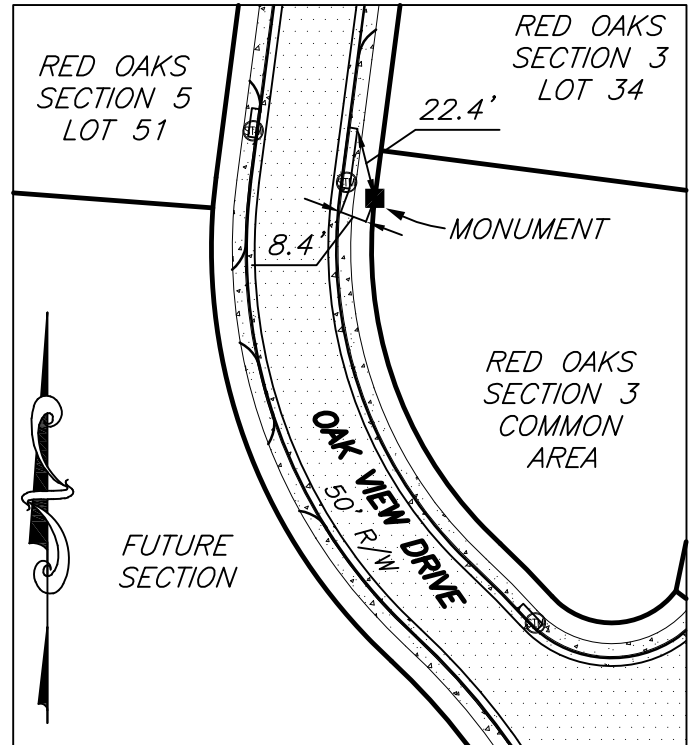
PERMANENT SURVEY MONUMENT #2018-70 CITY OF STAUNTON, VIRGINIA

LOCATION:

N: 6,730,162.058
E: 11,323,044.239

LAT: 38°07'40.90"N
LONG: 79°03'20.80"W

ORTHOMETRIC HEIGHT: 1545.40'



AZIMUTH MARK:

CASED CONCRETE MONUMENT IN CENTERLINE OF RED OAKS DRIVE AT INTERSECTION WITH SCARLET OAK DRIVE.

BEARING: S17°34'43"E
DISTANCE: 367.61'

ORTHOMETRIC HEIGHT: 1518.47'



NOTES:

- 1) THIS MONUMENT IS A CAPPED ROD IN CONCRETE READING "CITY OF STAUNTON SURVEY CONTROL."
- 2) THE POSITION OF THIS MONUMENT IS BASED ON THE 2006 CITY OF STAUNTON PERMANENT CONTROL SURVEY BY WILLIAMS-STACKHOUSE, INC..
- 3) THIS MONUMENT WAS SET IN CONJUNCTION WITH THE "RED OAKS SUBDIVISION".

PLANNERS • ARCHITECTS • ENGINEERS • SURVEYORS

ROANOKE • RICHMOND • NEW RIVER VALLEY • STAUNTON • HARRISONBURG

1561 Commerce Road • Suite 401 • Verona, Virginia 24482 • Phone (540) 248-3220 • hvance@balzer.cc

